

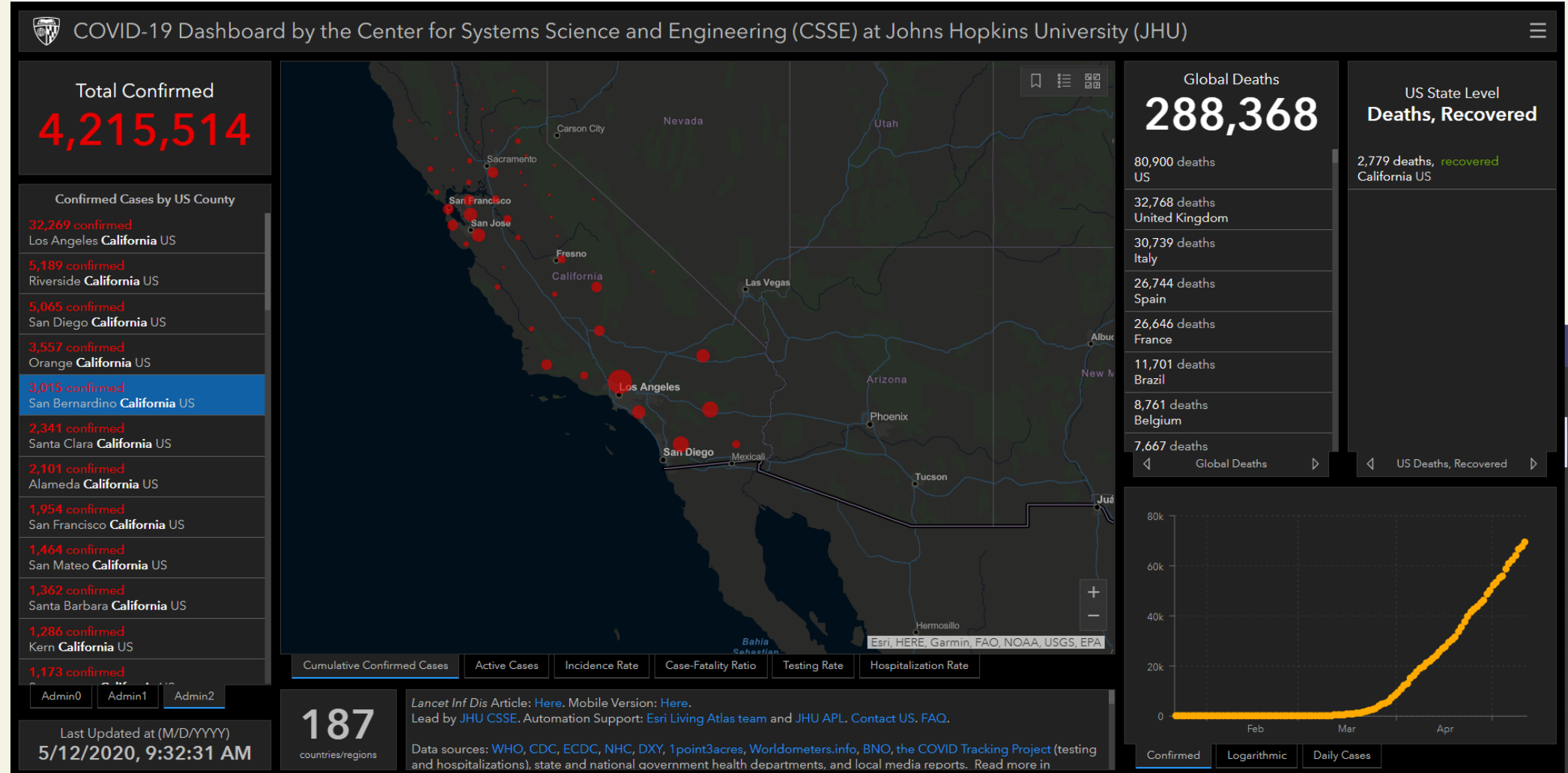
# COVID-19 and Location Technology

Cindy Elliott, Esri

Yasaman Kazemi, Esri

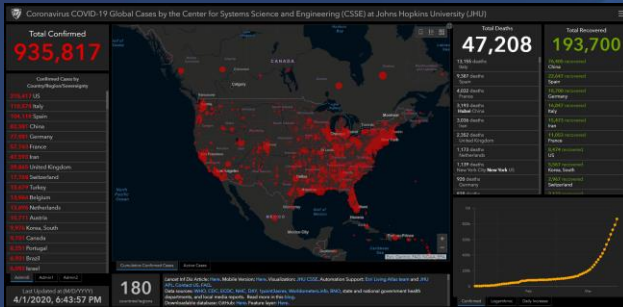
# JHU COVID-19 Dashboard

## JHU Dashboard



# Location Technology For Pandemic Response

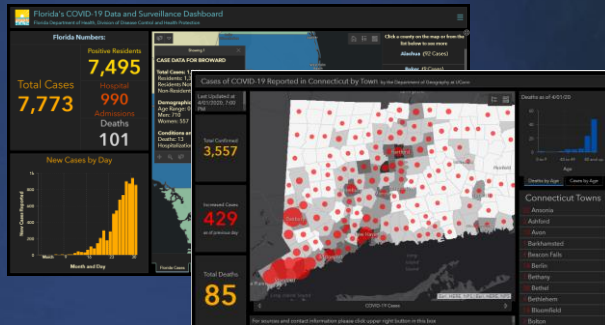
## Johns Hopkins University



## FEMA



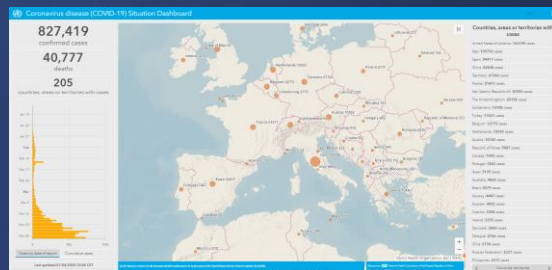
## State of Florida



## Connecticut



## WHO



Apps

Portal

Visualization and Analytic Services

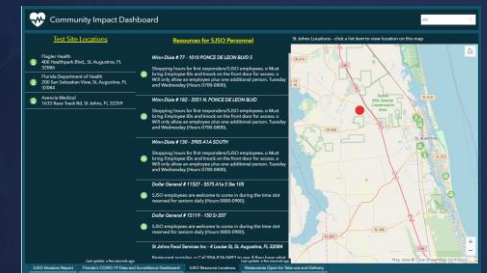
Case Data

Movement Data

Facilities

Population, Demographics & Basemaps

## US Military



## St Johns County, FL

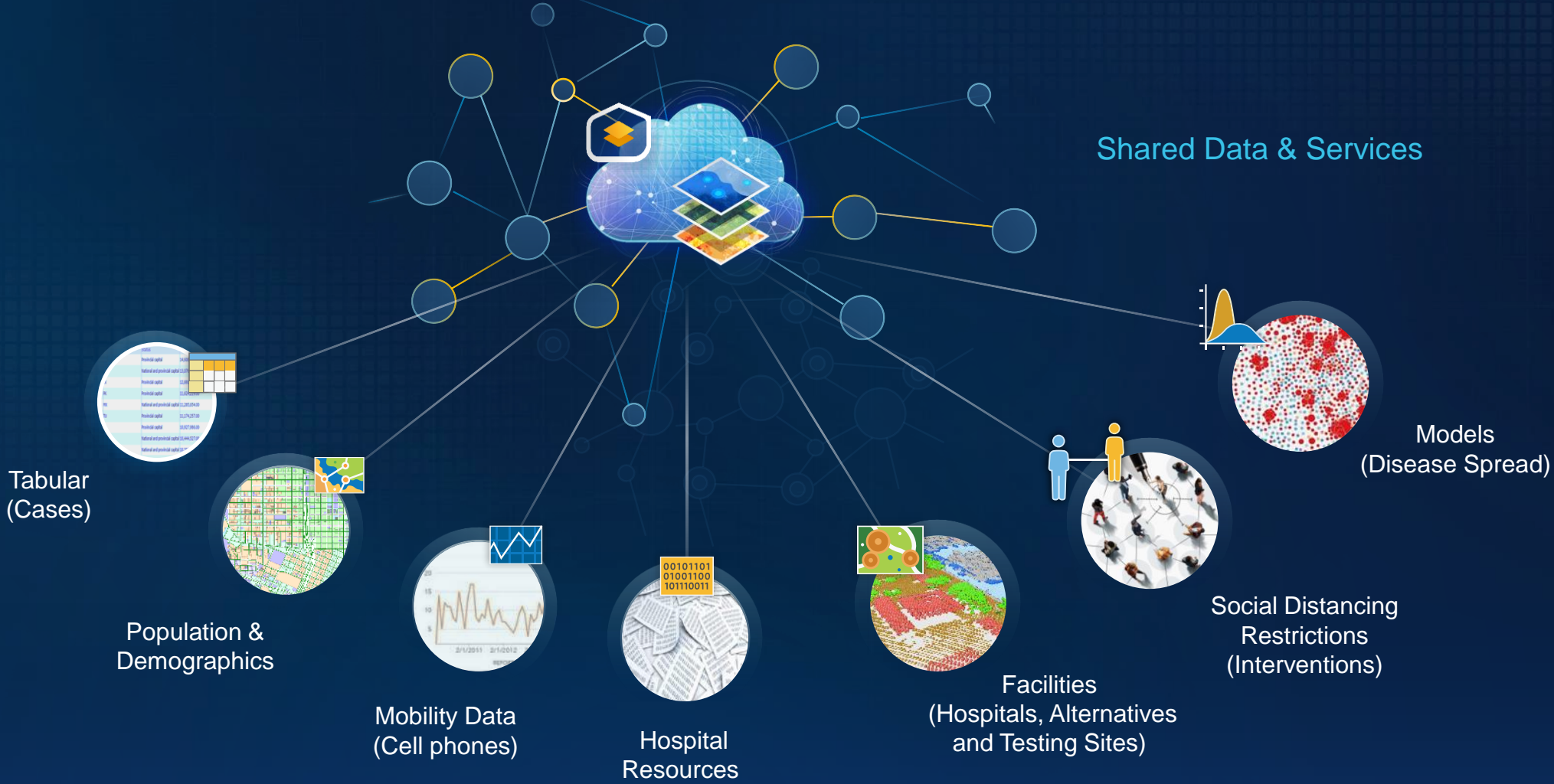
Organizing Content and Applications

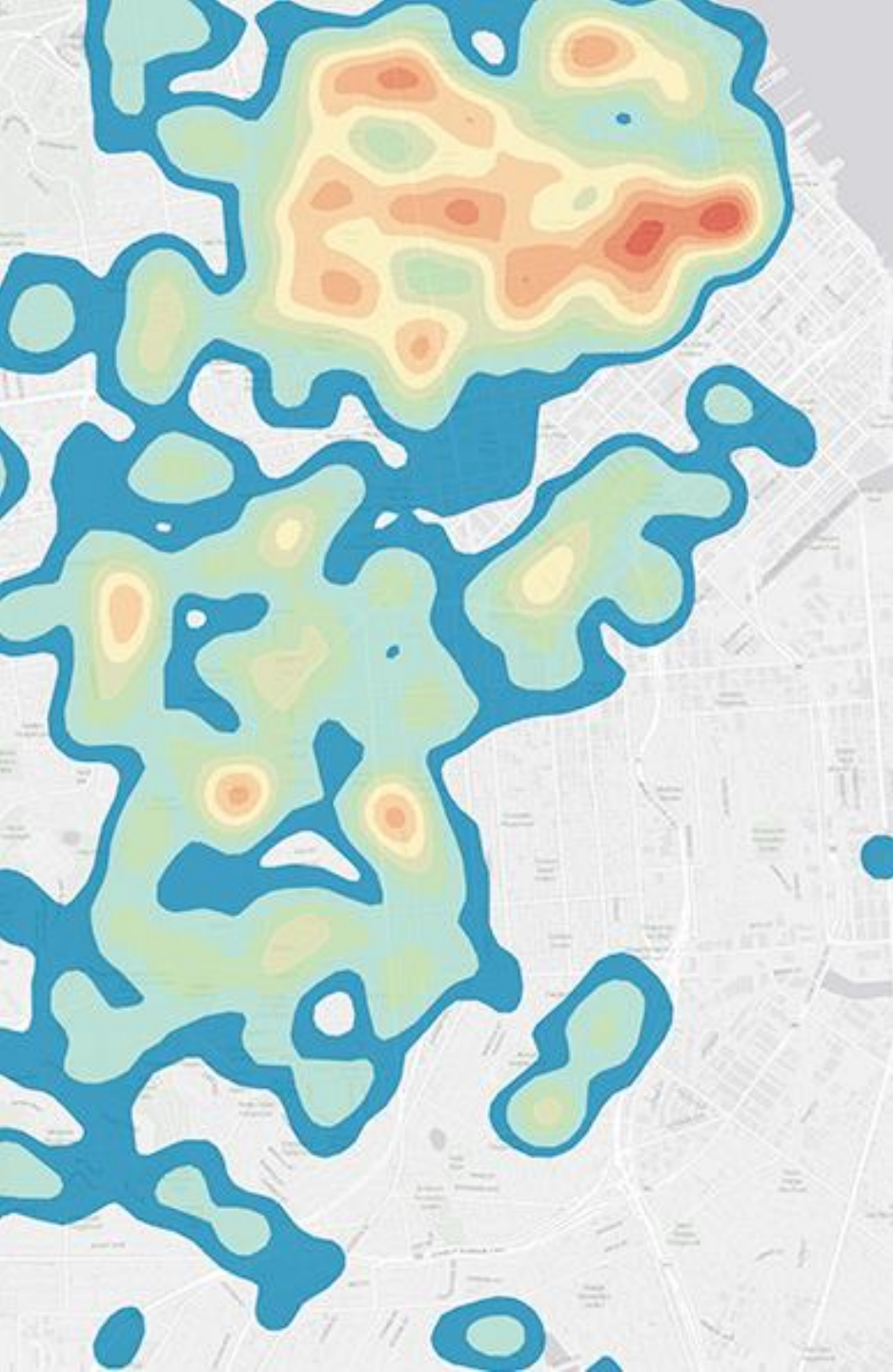
... Providing Mapping and Analysis

... Enabling Sharing and Better Decision Making

# Geography Unifies Data and Systems

## *Public Health and Safety*





## Addressing Business Continuity & Recovery

*“There’s no light switch here. It’s more like a dimmer,”* toggling back and forth between more and fewer rules.

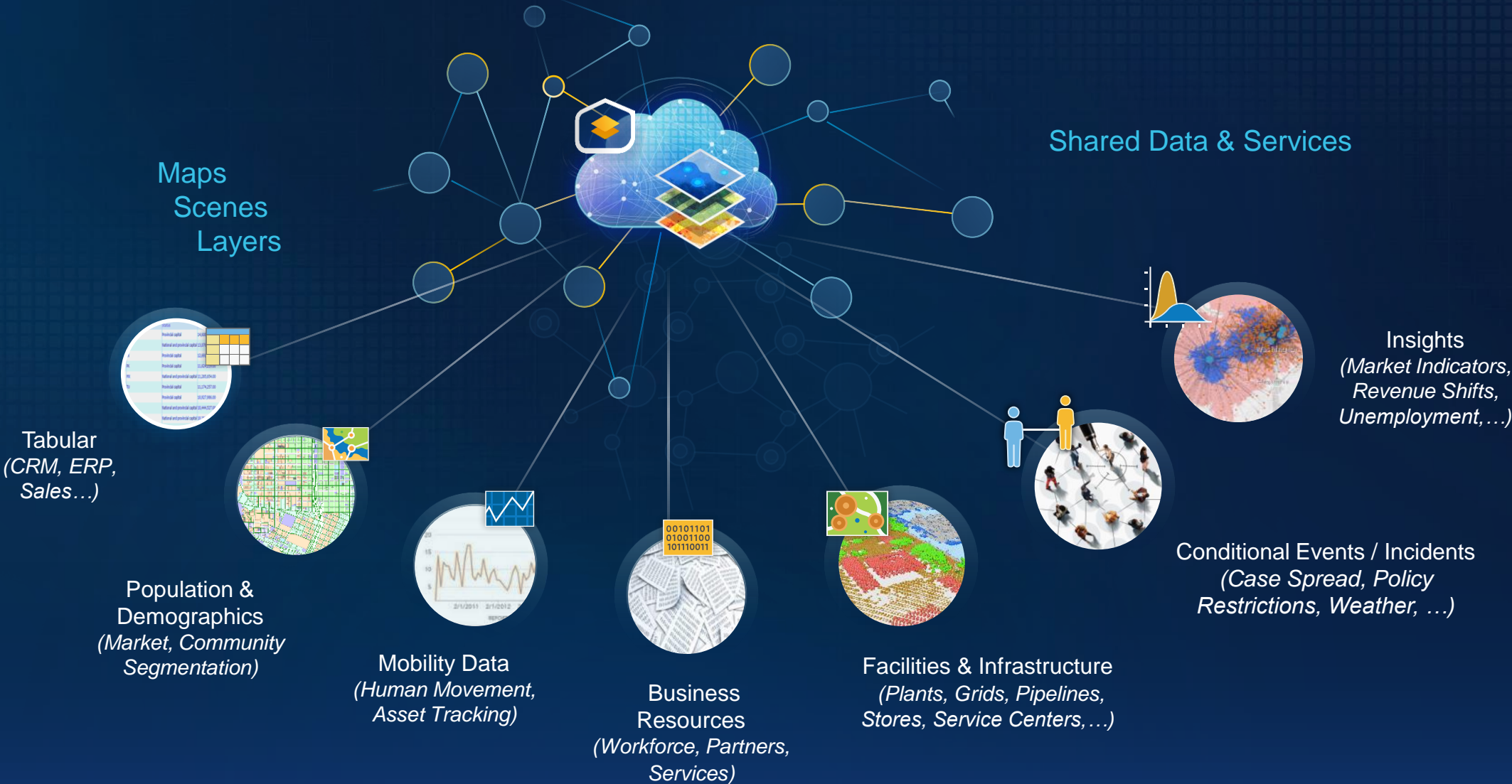
- Governor Newsom, State of California

*Recovery won’t be a rebound but a climb.* Successful reopening must have a data driven scientific approach.

- US Labor Secretary Scalia

# Geography Unifies Data and Systems

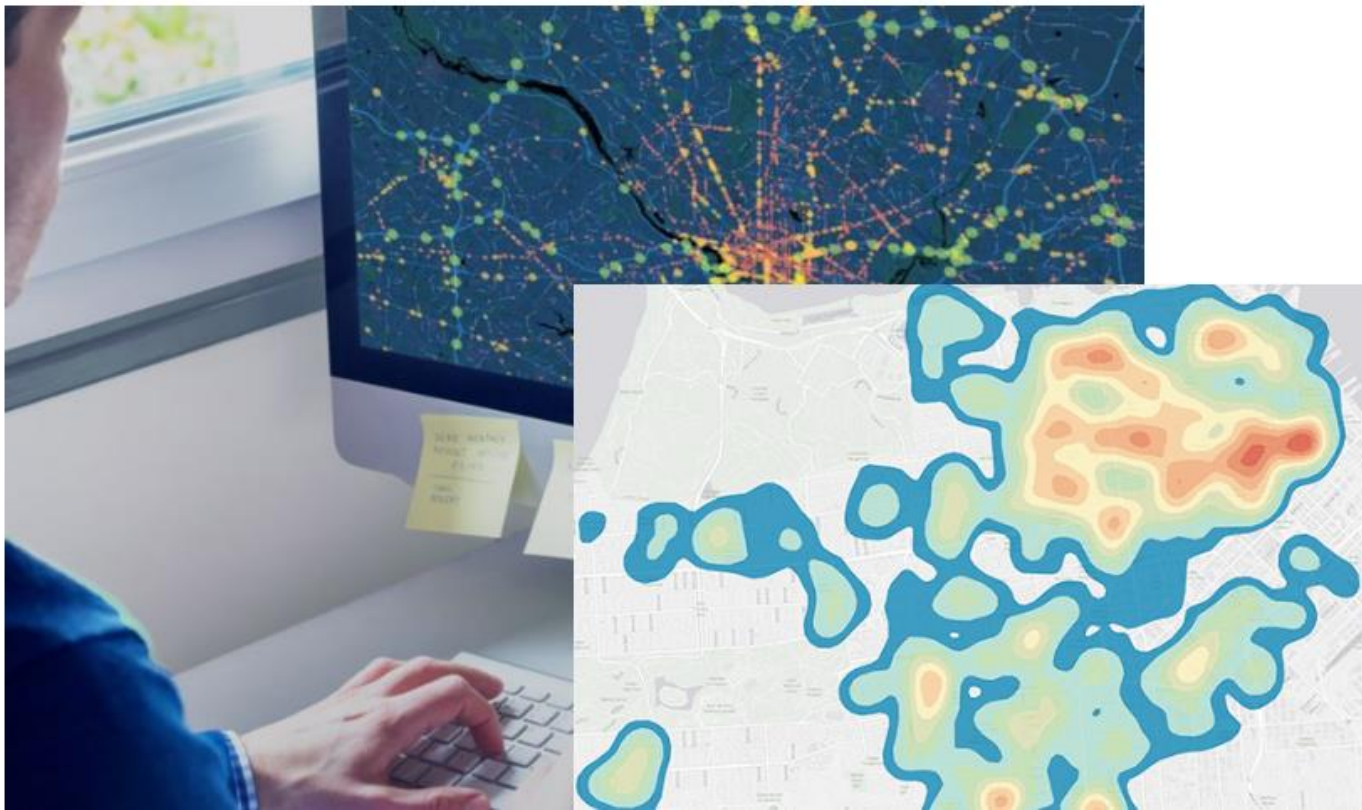
## *Business Continuity and Recovery*



# Business Continuity and Recovery

## Operational awareness for COVID-19

Protect, stabilize, and reestablish with location intelligence



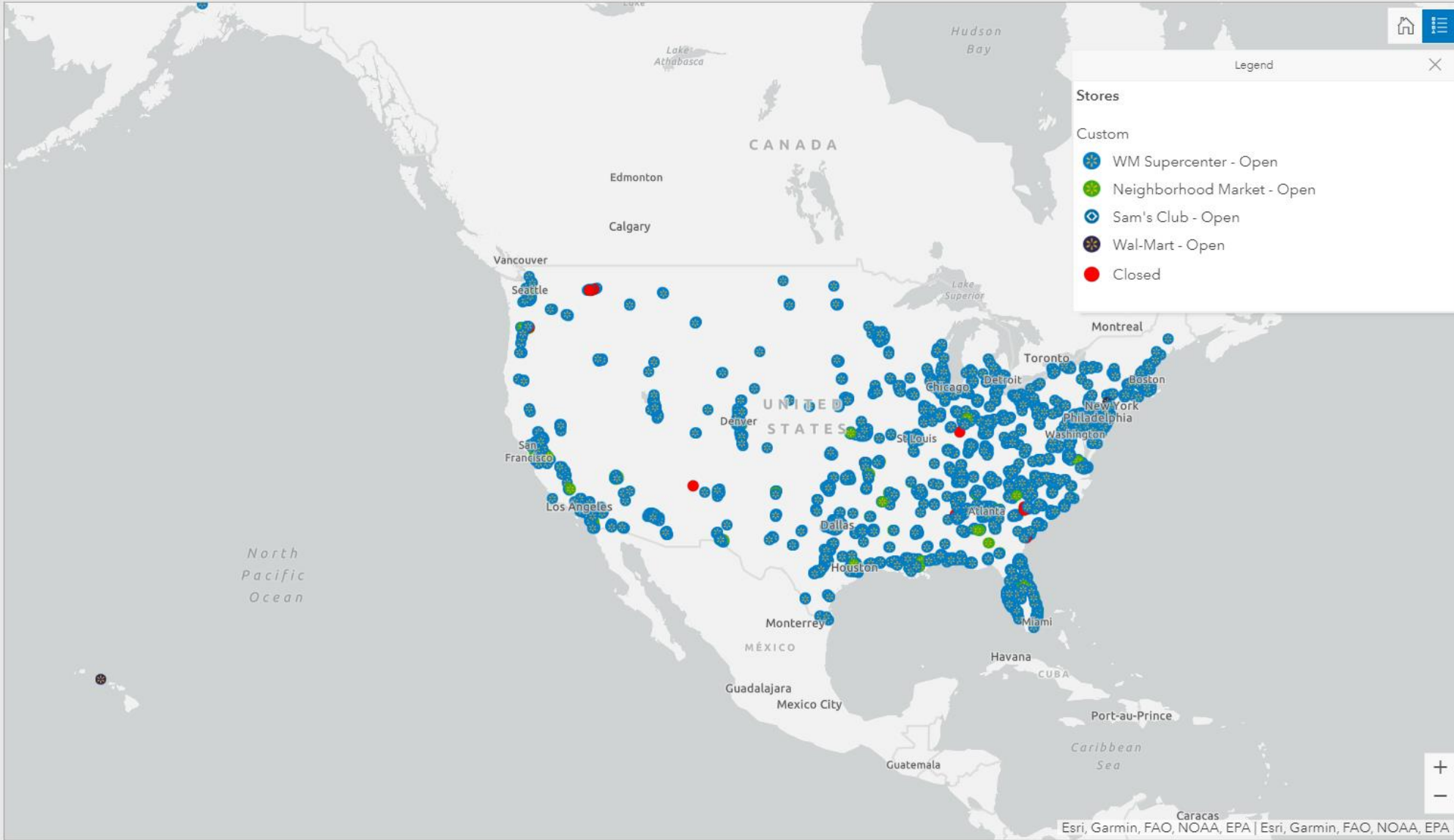
## Monitor, manage, and communicate the impact of COVID-19

Governments and businesses alike are facing unprecedented challenges related to COVID-19. To enhance business resilience, organizations can leverage location intelligence to understand the impact of the crisis and make data-driven decisions to enhance recovery efforts.

# Location Intelligence for COVID-19 Response and Recovery

Store Status

Open/Closed **All** Open-Partial Open Closed Pharmacy Status **All** Open Closed Online Grocery Pickup Status **All** Available Not Available Grocery Delivery Status **All** Available Not Available



Grocery Delivery Available at

**1,813**  
Stores

Last update: a few seconds ago

Online Grocery Pickup Available at

**3,191**  
Stores

Last update: a few seconds ago

Pharmacy Open at

**5,286**  
Stores

Last update: a few seconds ago



# Central Arkansas Water

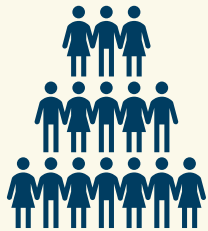


*"We use the dashboard in our daily Pandemic Response Team meetings as the first order of the agenda to quickly see the health of our workforce; who are obviously the lifeblood of our organization and are essential to our core mission of the constant supply of safe drinking water to the communities we serve."*

*- Blake F. Weindorf, P.E., BCEE, Chief Operating Officer*

# Location Intelligence For Business Continuity & Recovery

Stabilizing Organizations Through a Crisis



Workforce  
Capacity



Facility  
Status

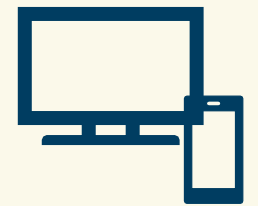


Business  
Recovery



Supply Network  
Resilience

**Business Continuity Hub**



# Facility Status

**Facility Status Report**

Name of Facility  
Esri Denver

Status\*

Open  Closed  Impacted

Staffing

Number of staff working in the office\*

Number of staff working remotely\*

Number of staff absent\*

Operating with essential staff only?

Yes  No

Are staff required to stay overnight?

Yes  No

Facility and Security

Entrance staffed?

Yes  No

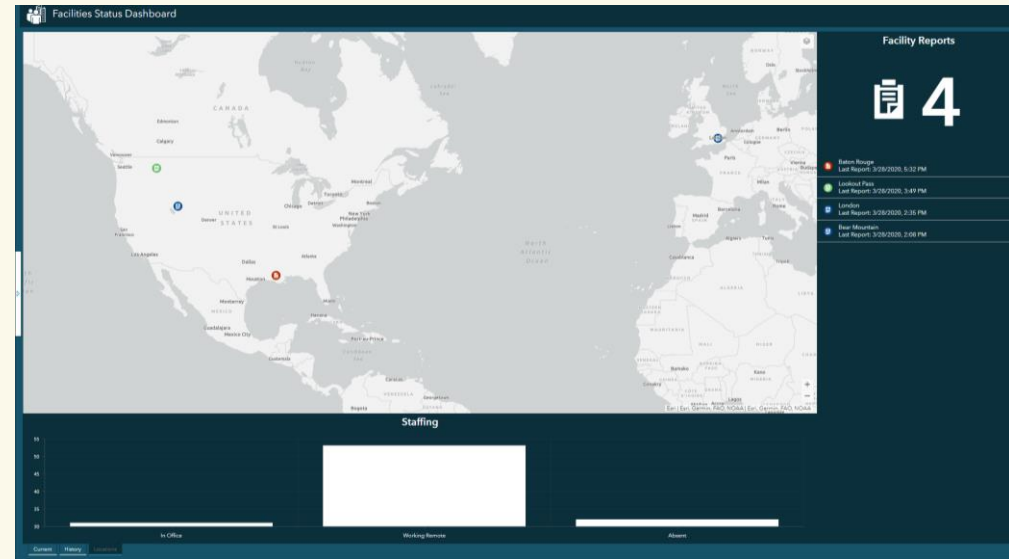
Building secured?

Yes  No

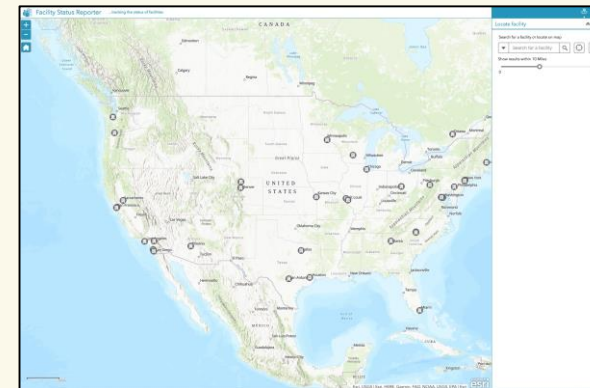
Access restricted?

Yes  No

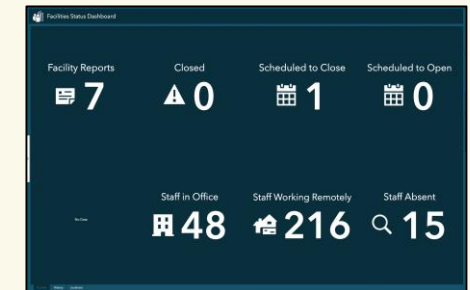
Facility Status Report



Facilities Status Dashboard



Facility Status Reporter

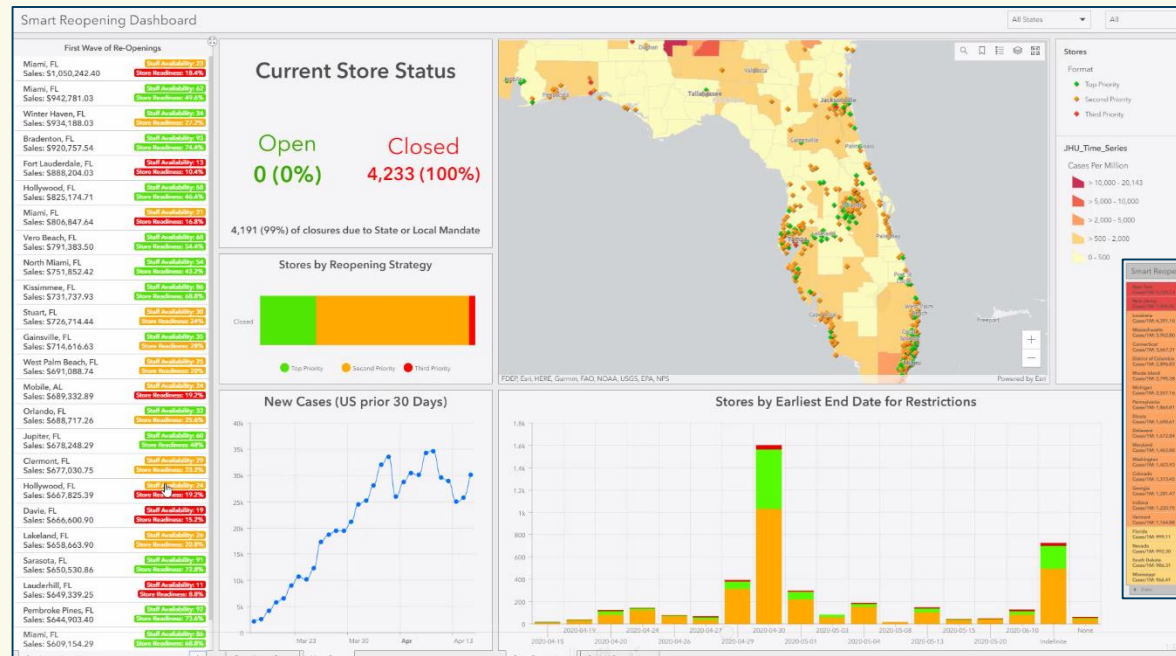


Facilities Status Dashboard

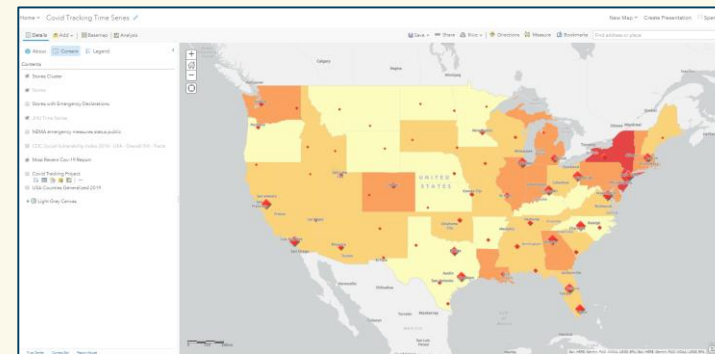
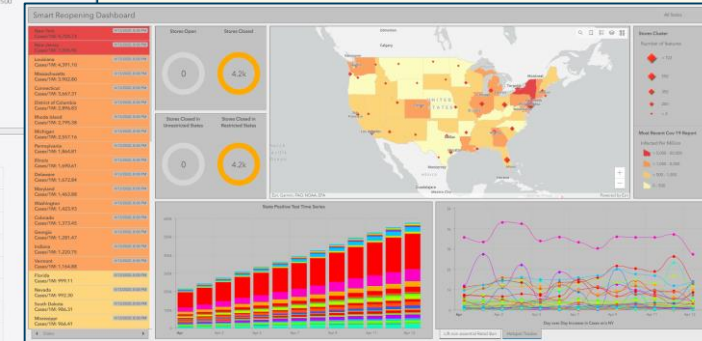




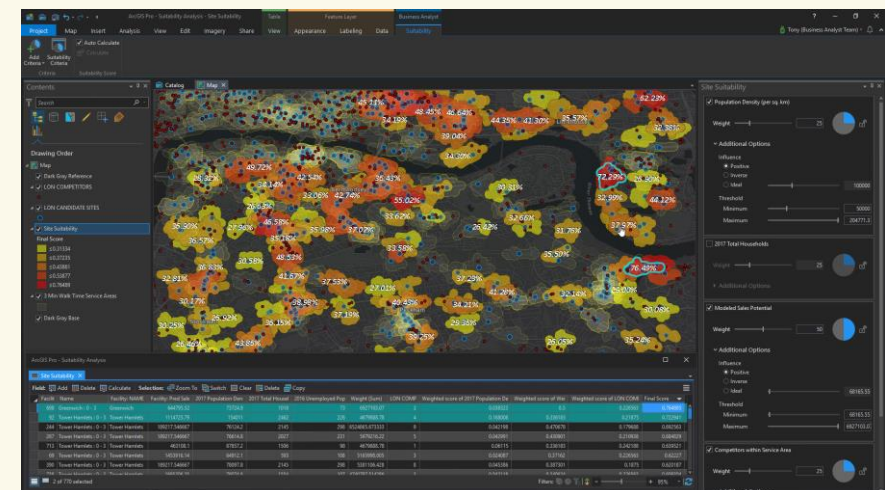
# Business Recovery



Business Site Reopening Dashboard

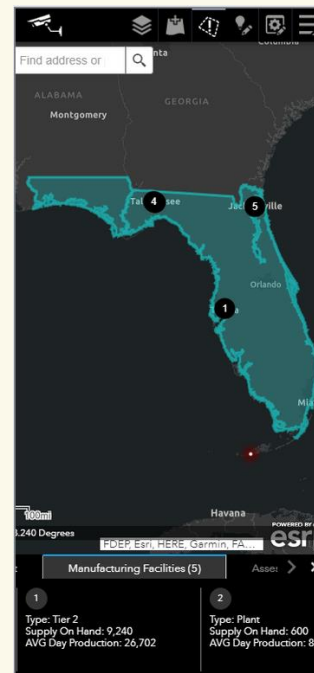


Site Location Map Overlay with Incident Data

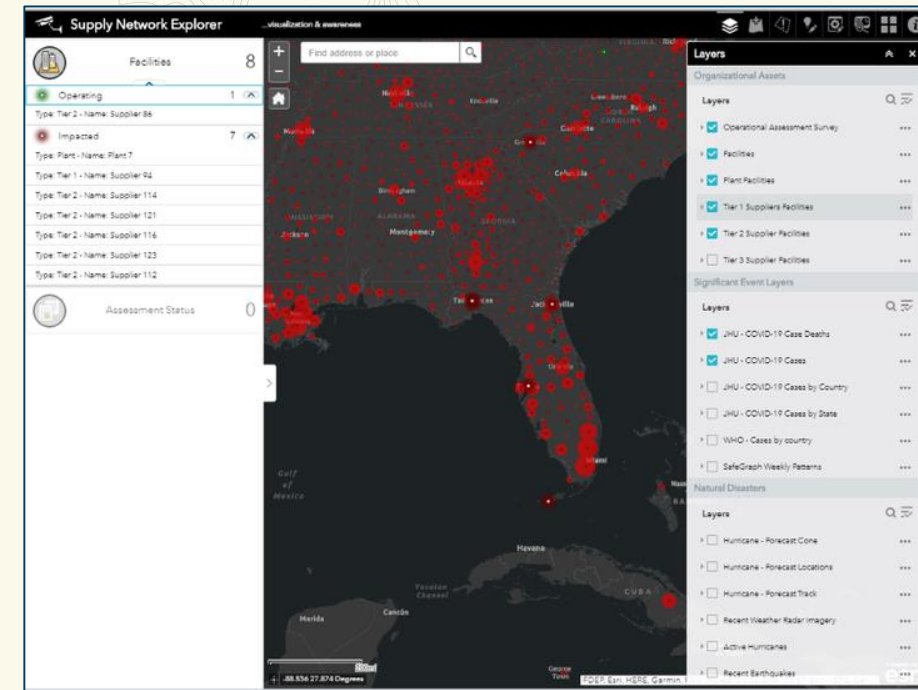


Suitability Analysis

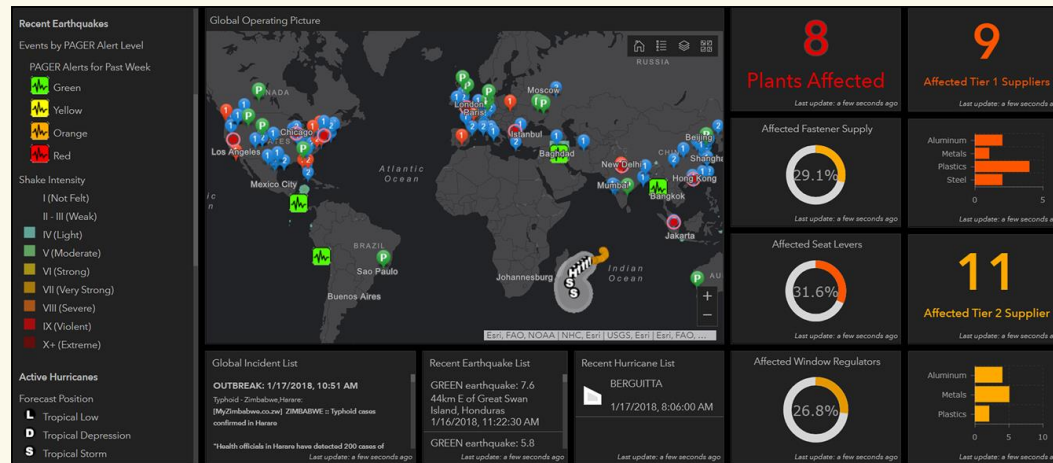
# Supply Network Resilience



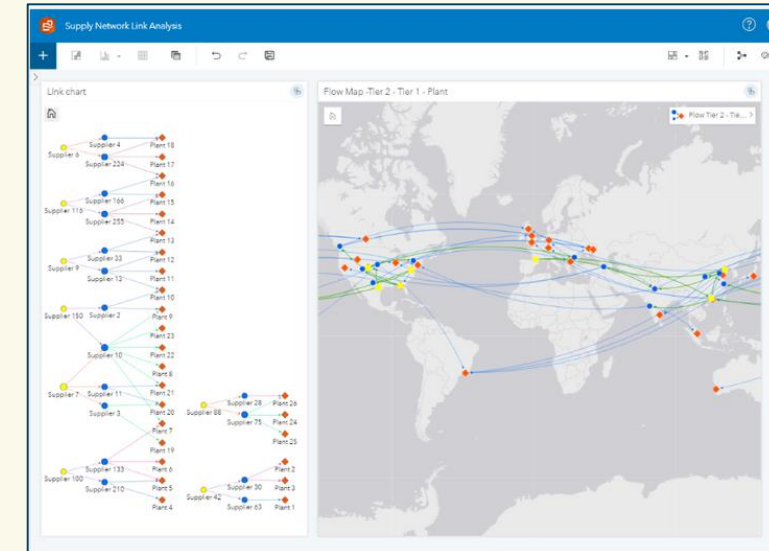
Network Explorer - Mobile



Incident Viewer



Global Operations Dashboard



Network Dependencies and Flow of Goods



# Coronavirus Business Continuity Hub

Coronavirus Business Continuity Internal Destination How to use this template

## Coronavirus Business Continuity

Our commitment to keeping you and your family safe during the COVID-19 pandemic

The health and safety of our customers, residents and employees is our top priority.

COVID-19 PSA: Surgeon General Socia... Watch later Share

**DR. ANTHONY FAUCI**  
NIAID DIRECTOR coronavirus.gov

### Watch the PSA

Most of us have ever experienced a situation quite like the coronavirus (COVID-19) pandemic. It has affected everyone, upended business and commerce, and disrupted the rhythms of our daily lives.

# COVID-19

## *Supply Network Resilience*





# COVID-19 Challenge, Impact and Mitigation

## ***Challenge***

- COVID-19 has forced businesses to close stores and plants or reduce production

## ***Impact***

- Inventory shortages and threatened production capacity
- Shift in priorities and demand to produce and deliver products or services
- Companies have furloughed thousands of employees throughout all business areas

## ***Mid-term risk mitigation***

- How to identify and mitigate emerging supply network threats?
- When and where can we begin to start and continue operations safely and effectively?
- What should our optimal distribution network look like during and after COVID-19?

# COVID-19 Supply Network Awareness & Recovery

## Five Steps

Step 1

**Map your data and overlay with COVID-19 data**

Step 2

**Visualize Supply Network, Identify Risks**

Step 3

**Assess Supply Network Dependencies**

Step 4

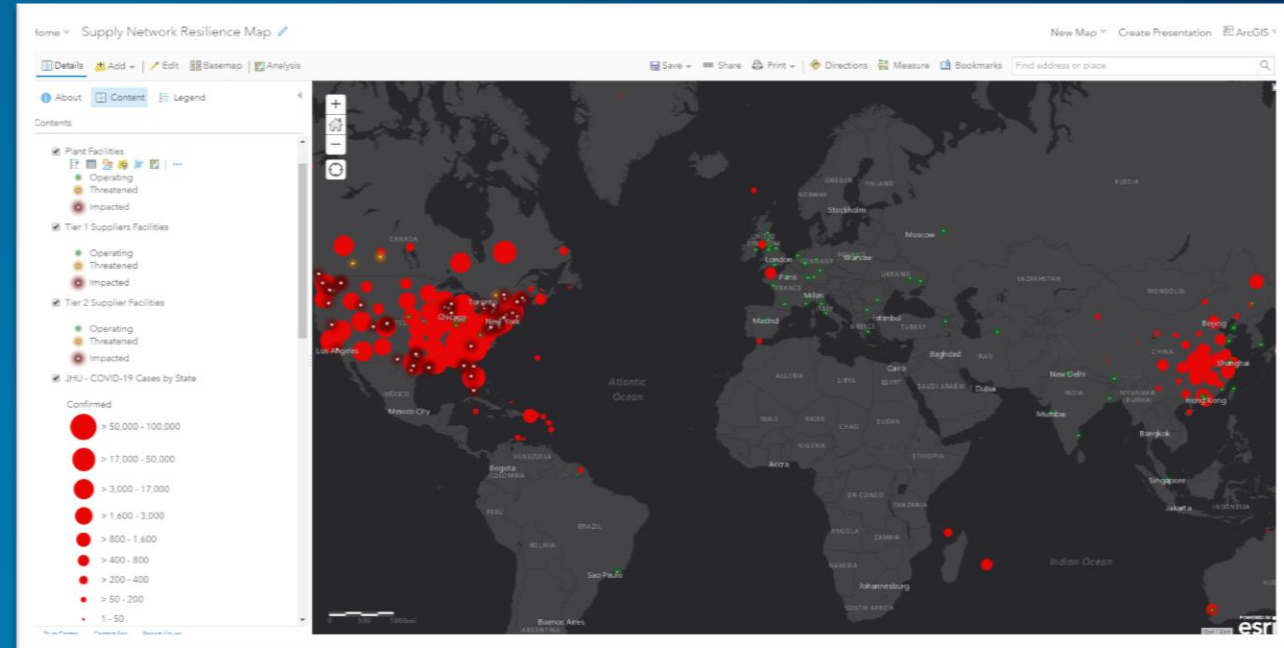
**Communicate with Maps, Dashboards and Mobile Apps**

Step 5

**Risk Analysis, Mitigation & Response**

## Step 1: Map

- Populate supply network information model
  - Load your supply network locations
  - Load your business data
- Activate Esri relevant risk layers (COVID-19 cases, natural disasters, incidents, ...)
- Create a webmap, define symbology and configure pop-ups

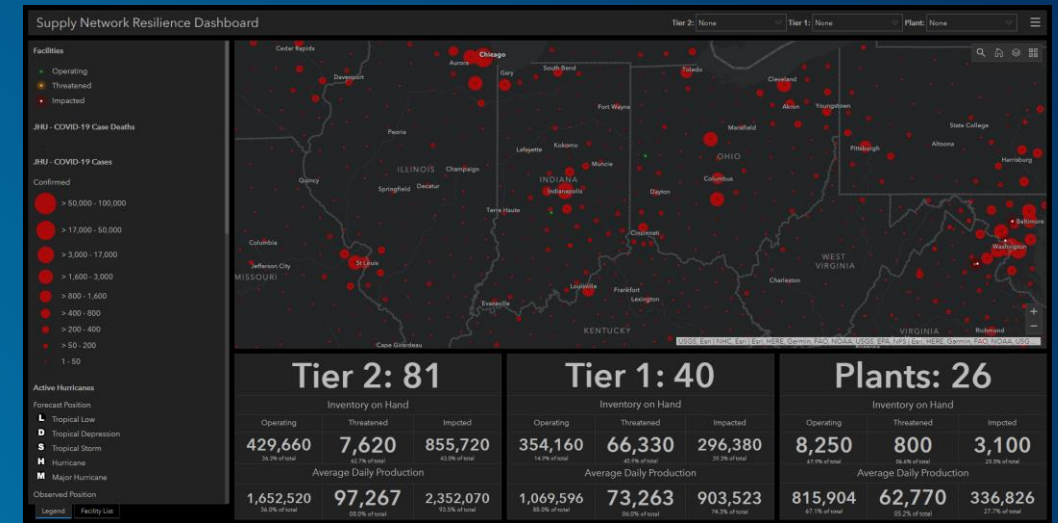


# Build A Business Information Model for Supply Network Resilience

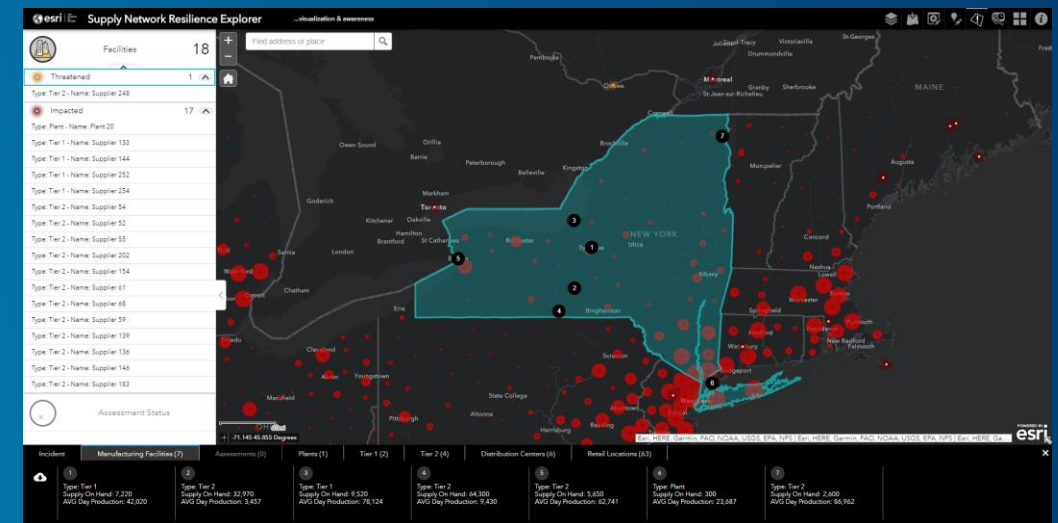
Minimal Data Requirements		Additional Contextual Content			
Facilities / Infrastructure	Conditions / Incidents	Workforce	Commerce Sites	Customers / Markets	Optional Data
<ul style="list-style-type: none"> <li>• Facility Data</li> <li>• Offices</li> <li>• Plants</li> <li>• Suppliers (Tier 1 and sub-tier)</li> <li>• Distribution Centers</li> <li>• Warehouses / Customers</li> <li>• Distribution network (Rail Yards, Ports, etc..)</li> </ul>	<ul style="list-style-type: none"> <li>• Weather</li> <li>• Traffic (Live, Closures)</li> <li>• Natural Disasters</li> </ul> <p>COVID-19 specific</p> <ul style="list-style-type: none"> <li>• COVID-19 cases</li> <li>• State &amp; county restrictions</li> <li>• School status</li> </ul>	<ul style="list-style-type: none"> <li>• Employee Status</li> <li>• Availability by Task and Site</li> </ul>	<ul style="list-style-type: none"> <li>• Stores</li> <li>• Restaurants</li> <li>• Banks</li> <li>• Hospitals</li> <li>• Schools</li> <li>• Delivery Services</li> </ul>	<ul style="list-style-type: none"> <li>• Demographics</li> <li>• Revenues</li> <li>• Category Mix</li> <li>• Trade Areas</li> <li>• Service Areas</li> <li>• Performance</li> <li>• Competition</li> </ul>	<ul style="list-style-type: none"> <li>• Street Maps</li> <li>• Parcels</li> <li>• Labor</li> <li>• Global Risk Incidents</li> </ul>

# Step 2: Visualize the Supply Network

- Configure Dashboards
  - Configure Global Incident Dashboard with metric indicators
  - Configure Supply Chain Risk Explorer
- Identify risk to supply network based on current risk factors (heat map, restricted movement)
- Display status and capacity of plants, supplier, logistics hubs
- Identify potential disruptions



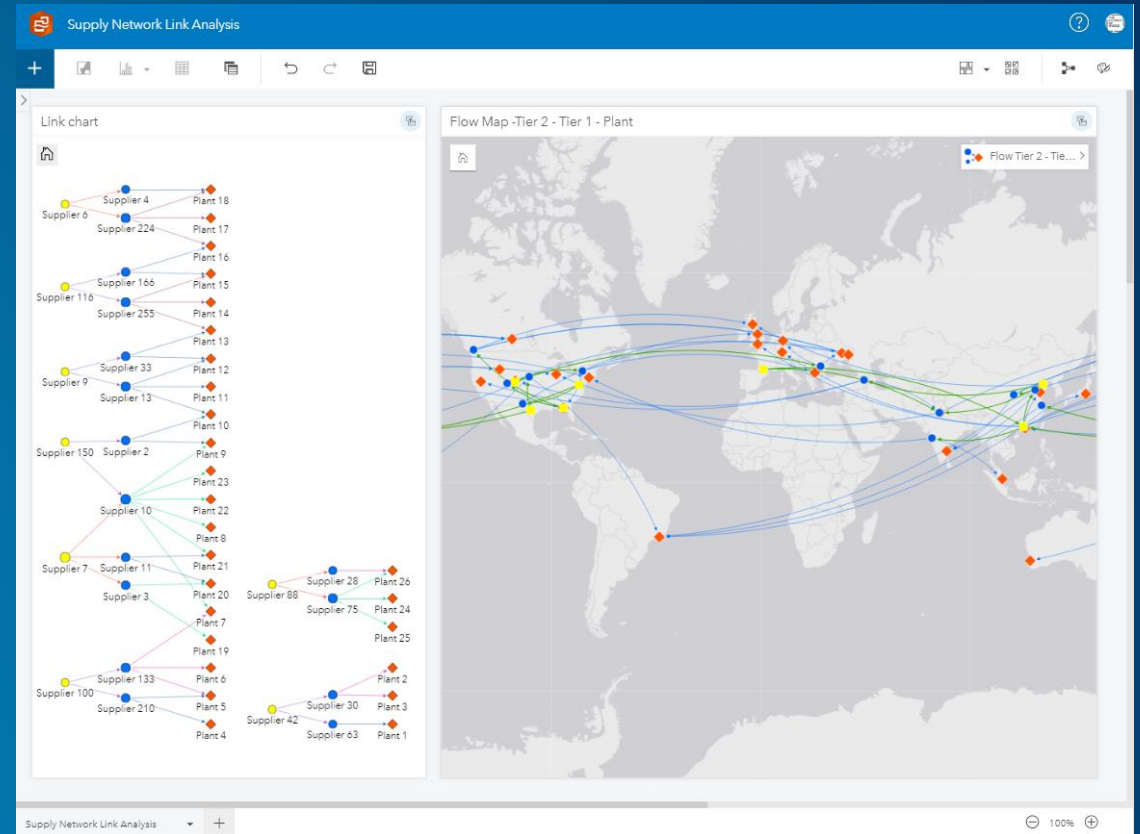
Supply Network Dashboard



Supply Network WebApp

## Step 3: Assess Dependencies

- Set up Supply Network Connections app
- Visualize upstream and downstream flow of material
- Isolate supplier and plants affected by disruption and identify impact on downstream channels



Supply Network Connections Explorer

## Step 4: Communicate

- Share and collaborate with stakeholders
- Common Operating Picture showing COVID-19 impact on supply network
- Briefing and Presentation Material



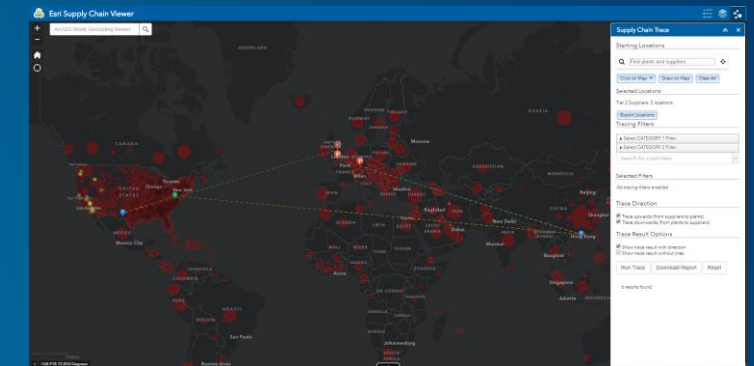
# Step 5: Risk Mitigation & Response

*Advanced analytics based on needs*

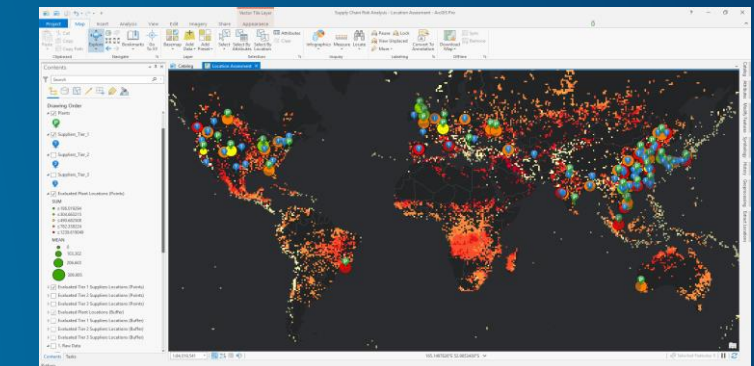
- Assign risk scores to plant & suppliers
- Allocate demand to supply with location allocation
- Determine alternatives
- Visual alerts
- Notification
- Product and parts tracing



Global Risk Awareness Dashboard



Supply Network Tracing App



Risk Mitigation Analysis Tools





**esri**

**THE  
SCIENCE  
OF  
WHERE**

Email any questions to: [bizteam@esri.com](mailto:bizteam@esri.com)